



Manual Sediso Central Alarm Controller

In the box:



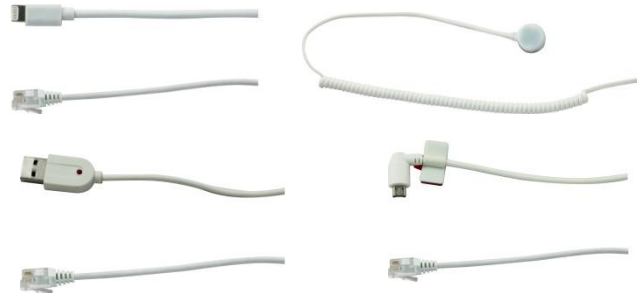
- 1 of 2 ports central alarm controller (1)
AC Adapter and power cable (2)

* = mandatory part

Optional:



Remote control*(4)



Charge and alarm cable (5)

Installation

- 1) Activate the alarm by sliding the micro switch on the bottom to the "ON" position.
- 2) Connect the central alarm controller (1) to the AC Adapter (2) and the power cord to the AC Adapter (2) and the wall outlet. Check if the LED light on the AC Adapter (2) is working.
- 3) Connect the alarm/charge cable(s) to the (5) central controller (1).
- 4) Connect the other end of the alarm/charge cable to the product. In case of connecting an alarm sensor with double sided tape, clean the surface with the alcohol pad before sticking on the alarm sensor. Make sure the alcohol is evaporated.
- 5) Activate the central controller (1) by pressing the on/off button of the remote control (4). You will hear a beep when the unit is activated.
- 6) Whenever the alarm controller or a charge cable or sensor is removed or cut the alarm will be triggered. By pressing the button on the remote control you can switch off the alarm.

Opmerkingen:

- Test the system before installation.
- In case of power failure the alarm will be in stand-by for approx.2 weeks. However the device will not be charged.
- The central controller can be switched off completely by using the micro switch on the bottom of the controller. The alarm can only be switched off after it is triggered to prevent others from switching it off using a similar remote control.