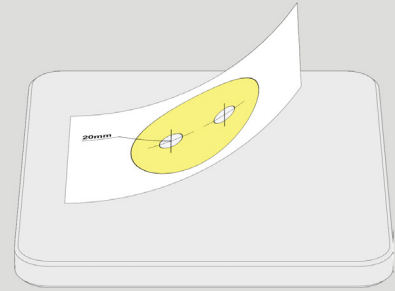


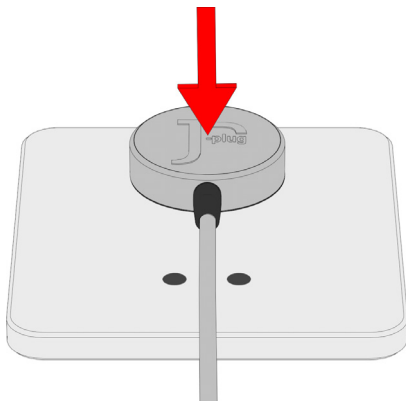
TO INSTALL: LOOP 2 PUCK

1. Using template provided, drill two holes into a surface.

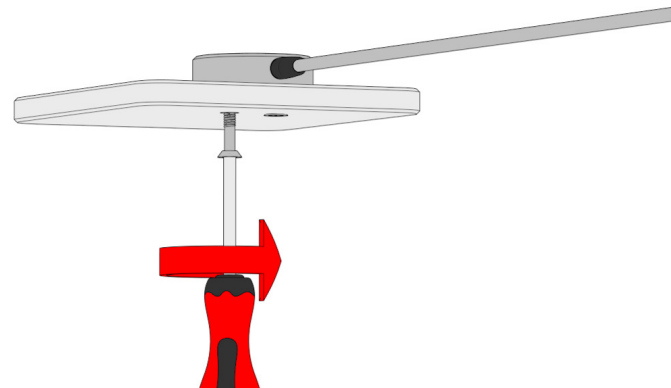


For the adhesive option remove adhesive film and attach to surface.

2. Align and place the Loop Puck onto the drilled surface.

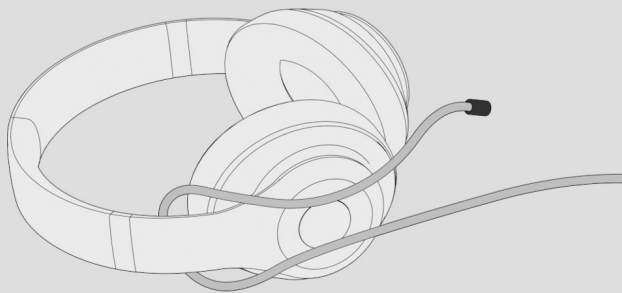


3. Insert M5 Screws (not provided) and screw clockwise to secure puck to surface.

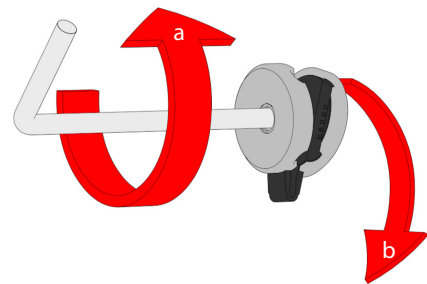


TO INSTALL: LOOP 2

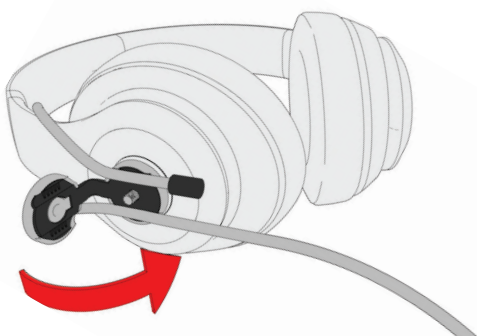
1. Loop cable around the product.



2a. Using the Tetrakey screw anti-clockwise to release the Pendant.
b. Lift and open the Pendant.



3. Attach the Pendant to the cable then close the Pendant with the J-Plug logo facing you.



4. Using the Tetrakey screw clockwise to secure the Pendant.

