

X12

User Manual





WARNING

ALWAYS FOLLOW SAFETY PRECAUTIONS

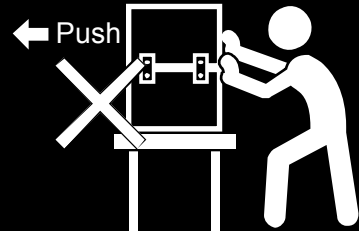
Only Adults should move the cabinet.



Never climb, sit or stand on the cabinet.



Secure the cabinet to avoid fall down.



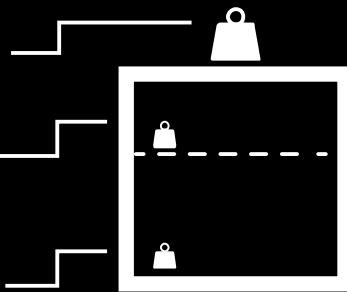
CAUTION

This cabinet is intended for use only with loading as indicated. Use with loads greater than indicated may result in instability causing possible injury.

$\leq 44.1\text{lbs}$ (20kg)

$\leq 13.2\text{lbs}$ (6kg)

$\leq 72\text{lbs}$ (32.6 kg)



- Death or serious injury may occur when children climb on audio and/or video equipment furniture. A remote control or toys placed on the furnishing may encourage a child to climb on the furnishing and as a result the furnishing may tip over on to the child.
- Relocating audio and/or video equipment to furniture not specifically designed to support audio and/or video equipment may result in death or serious injury due to the furnishing collapsing or over turning onto a child.

CAUTION!

- **DO NOT** allow anyone to sit, stand or climb on the cabinet.
- **DO NOT** lift the cabinet.
- **DO NOT** block the ventilation holes used for air circulation.
- **DO NOT** overload objects on the cabinet shelf. (Top of cabinet maximum loading = 20kg / 44.1lbs; the shelf maximum loading = 32.66kg / 72lbs).
- **DO NOT** put any devices that the weight is over the maximum loading weight on top of cabinet.
- When moving the cabinet, **DO NOT** put any devices (ex: TV, Monitor, Documents camera...etc.) on top of cabinet.
- No TV/monitor is to be used on top of cabinet.
- Before moving the cabinet, disconnect the power from the wall outlet.
- While moving the cabinet, make sure the power cord is secured and tightly wrapped.

FCC NOTICE (Class A)



This device complies with Part 15 of the FCC Rules. Operation is subject to the following two conditions: (1) this device may not cause harmful interference, and (2) this device must accept any interference received, including interference that may cause undesired operation.

Federal Communications Commission Statement

NOTE: This equipment has been tested and found to comply with the limits for a Class A digital device, pursuant to part 15 of the FCC Rules. These limits are designed to provide reasonable protection against harmful interference when the equipment is operated in a commercial environment. This equipment generates, uses, and can radiate radiofrequency energy and, if not installed and used in accordance with the instruction manual, may cause harmful interference to radio communications. Operation of this equipment in a residential area is likely to cause harmful interference in which case the user will be required to correct the interference at his own expense.

FCC Caution: Any changes or modifications not expressly approved by the party responsible for compliance could void the user's authority to operate this equipment.

This device complies with part 15 of the FCC Rules.

Operation is subject to the following two conditions:

(1) This device may not cause harmful interference, and this device must accept any interference received, including interference that may cause undesired operation.

European Community Compliance Statement (Class A)



This product is herewith confirmed to comply with the requirements set out in the Council Directives on the Approximation of the laws of the Member States relating to Electromagnetic Compatibility Directive 2014/30/EU.

Warning: This is a class A product. In a domestic environment this product may cause radio interference in which case the user may be required to take adequate measures.

DISCLAIMER

No warranty or representation, either expressed or implied, is made with respect to the contents of this documentation, its quality, performance, merchantability, or fitness for a particular purpose. Information presented in this documentation has been carefully checked for reliability; however, no responsibility is assumed for inaccuracies. The information contained in this documentation is subject to change without notice.

In no event will AVer Information Inc. be liable for direct, indirect, special, incidental, or consequential damages arising out of the use or inability to use this product or

documentation, even if advised of the possibility of such damages.

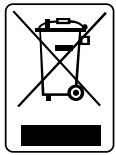
TRADEMARKS

“AVer” is a trademark owned by AVer Information Inc. Other trademarks used herein for description purpose only belong to each of their companies.

COPYRIGHT

©2018 AVer Information Inc. All rights reserved.

All rights of this object belong to AVer Information Inc. Reproduced or transmitted in any form or by any means without the prior written permission of AVer Information Inc. is prohibited. All information or specifications are subject to change without prior notice.



The mark of Crossed-out wheeled bin indicates that this product must not be disposed of with your other household waste. Instead, you need to dispose of the waste equipment by handing it over to a designated collection point for the recycling of waste electrical and electronic equipment. For more information about where to drop off your waste equipment for recycling, please contact your household waste disposal service or the shop where you purchased the product.

Contact Information

Global

AVer Information Inc.
www.aver.com
8F, No.157, Da-An Rd., Tucheng
Dist.,
New Taipei City
Taiwan
Tel: +886-2-2269-8535
Fax: +886-2-2269-8537

USA

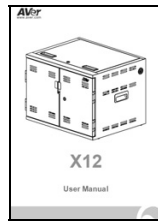
AVer Information Inc.
668 Mission Ct
Fremont, CA 94539
www.averusa.com
Toll-free: 1(877)528-7824
Local: 1(408)263-3828
Fax: 1(408)263-8132
Fax(RMA): 1(408)263-3822
Support.usa@aver.com

CONTENTS

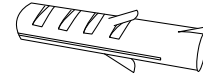
Package Contents	1
Tools Required	1
Dimensions	2
Diagram	2
Front and Back	2
Sides	3
Top and Bottom	3
Installation	4
Door/Top Cover Lock	4
Charging the Cabinet	5
Adapter Configuration	6
Cable Management	7
Wall Mount	8
Stacking Installation	9
Troubleshooting	10
Specifications	11
Service and Warranty	12

Package Contents

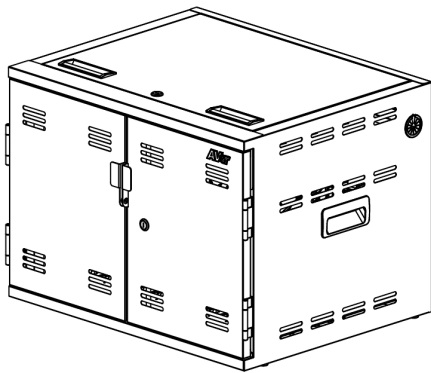
The following items are included in the package. Please check if each item is available before using.



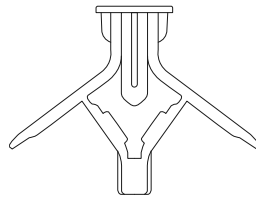
User Manual



Concrete Anchor x 6



X12 Cabinet



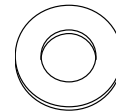
Drywall Anchor x 6



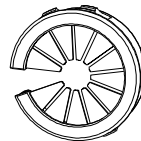
Anchor Screw x 6



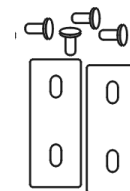
Lock key x 4



Washer x 6



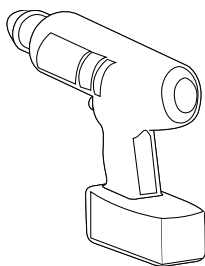
Cable Grommet x 2



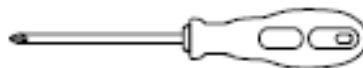
Stacking Kits

Tools Required

For wall mount use.



Drill



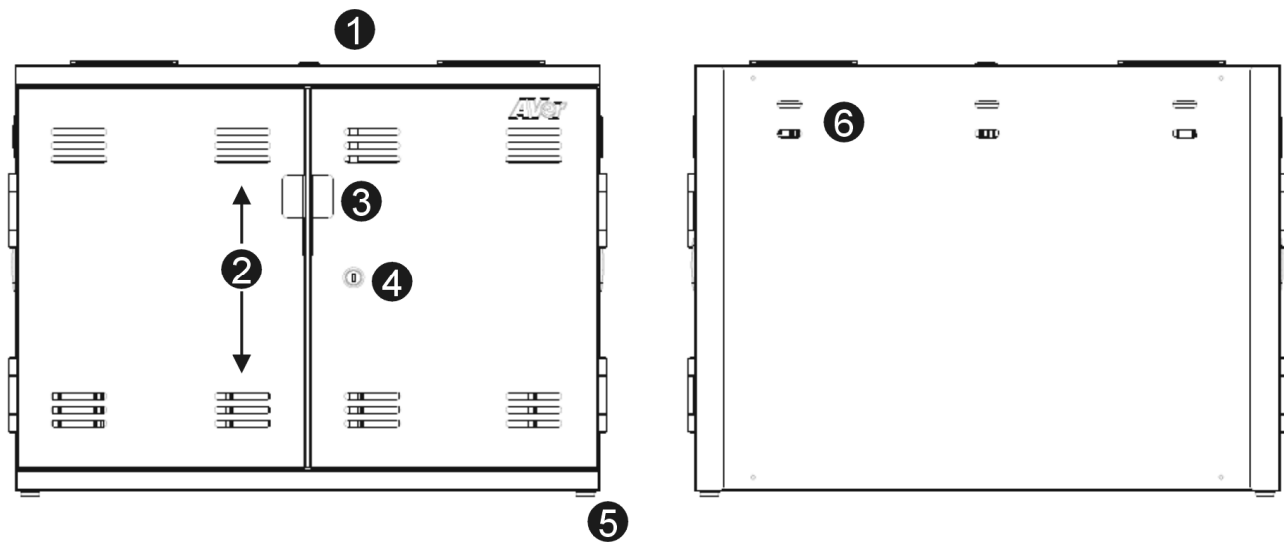
Screwdriver

Dimensions

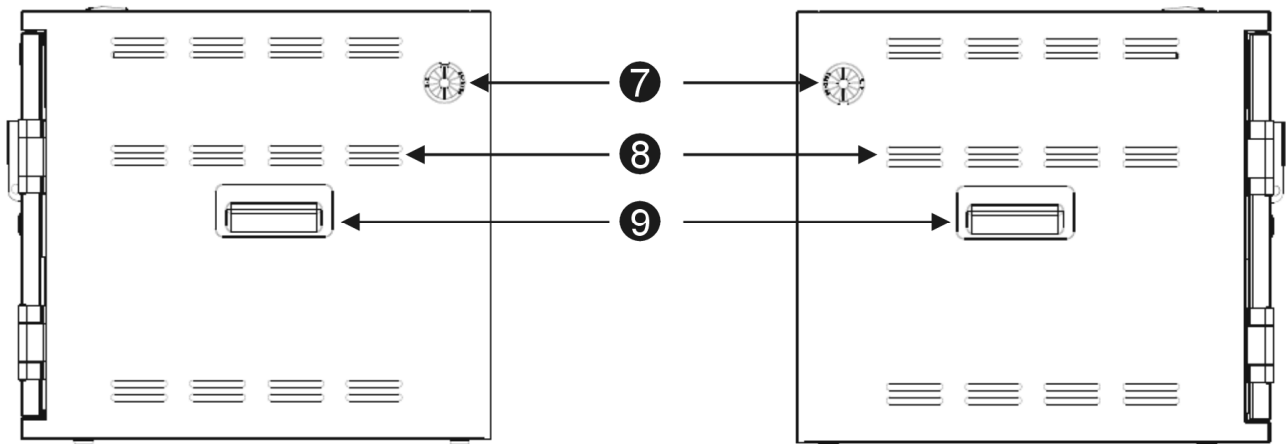


Diagram

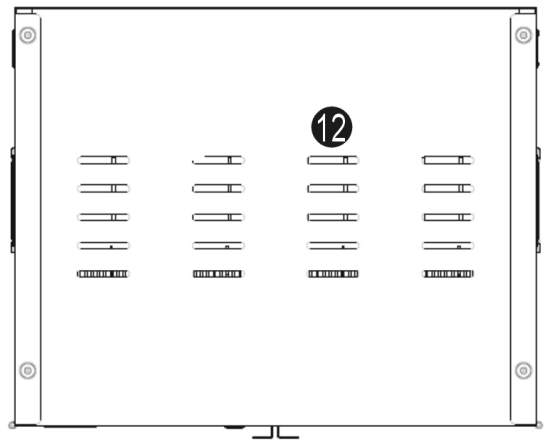
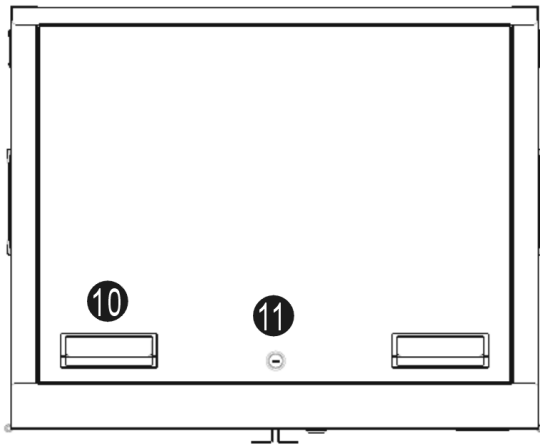
Front and Back



Sides



Top and Bottom



Front and Back

1. Cabinet top cover
2. Ventilation holes
3. Finger Pull
4. Door lock
5. Foot rubber
6. Wall mount holes

Sides

7. Power cable hole
8. Ventilation holes
9. Handle

Top and Bottom

10. Handle
11. Top cover lock
12. Ventilation holes

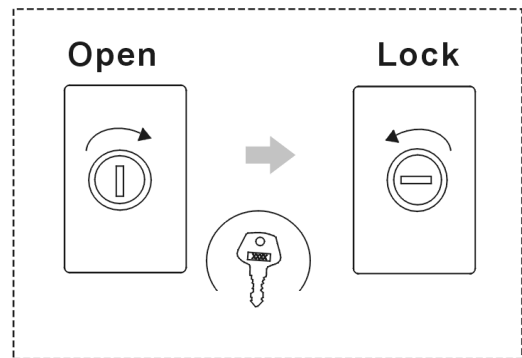
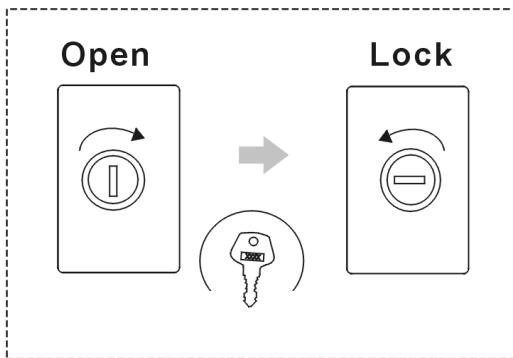
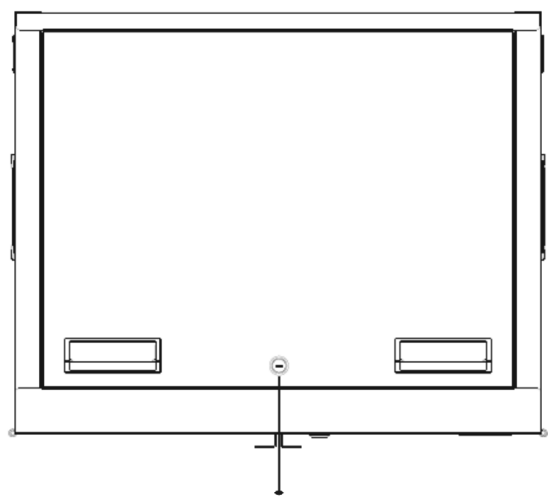
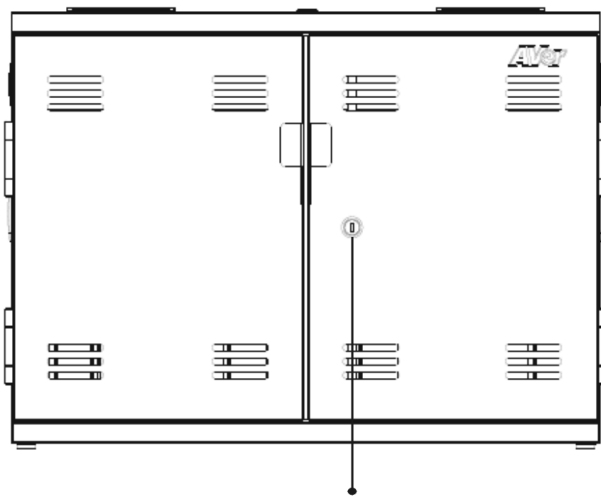
Installation

[Note]

1. It is recommended to use cable ties or zip-tie (optional) to secure and manage cables.
2. It is recommended to allocate 2 persons for efficient device cabling.

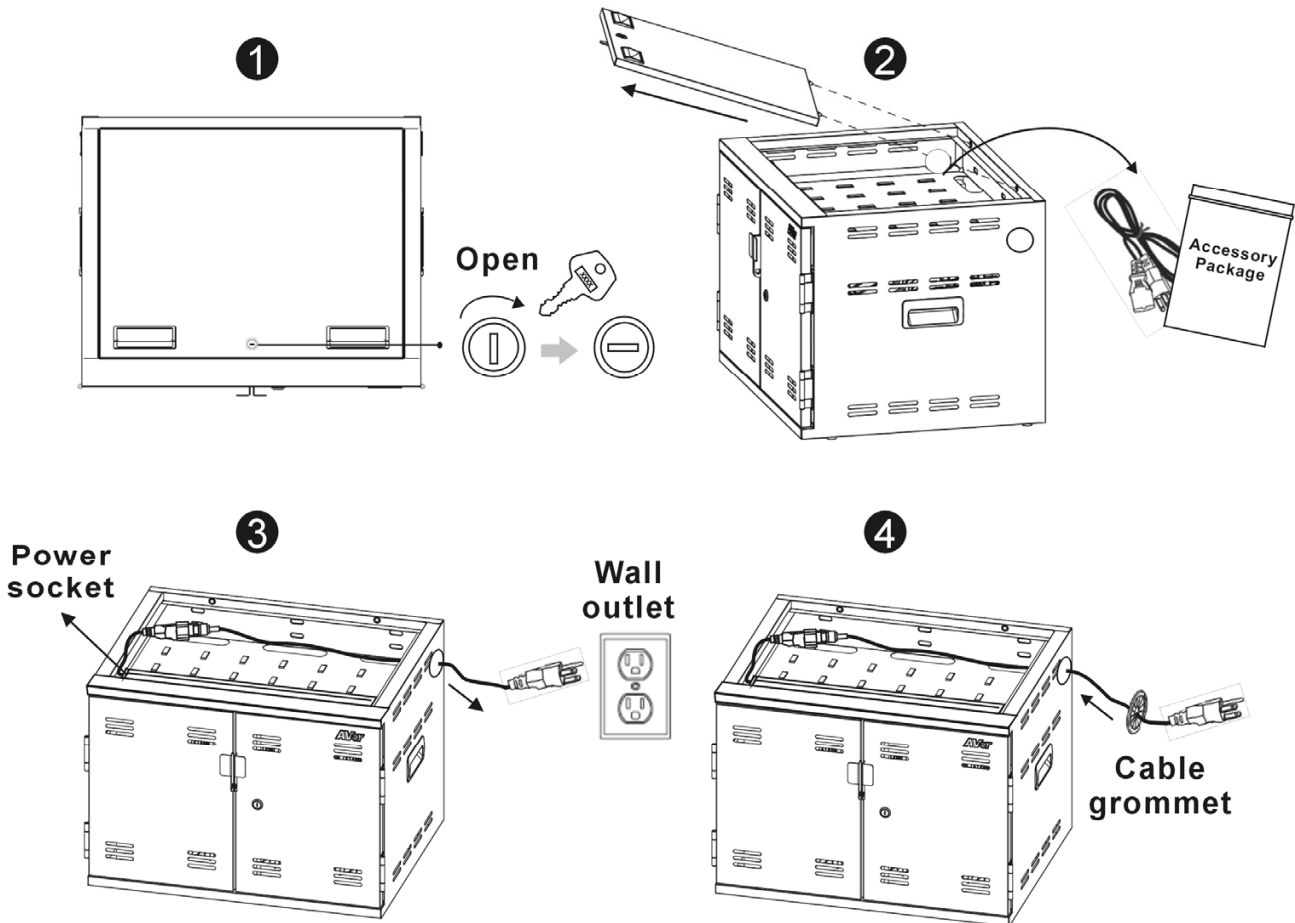
Door/Top Cover Lock

For security, use the lock key to secure the door and top cover.



Charging the Cabinet

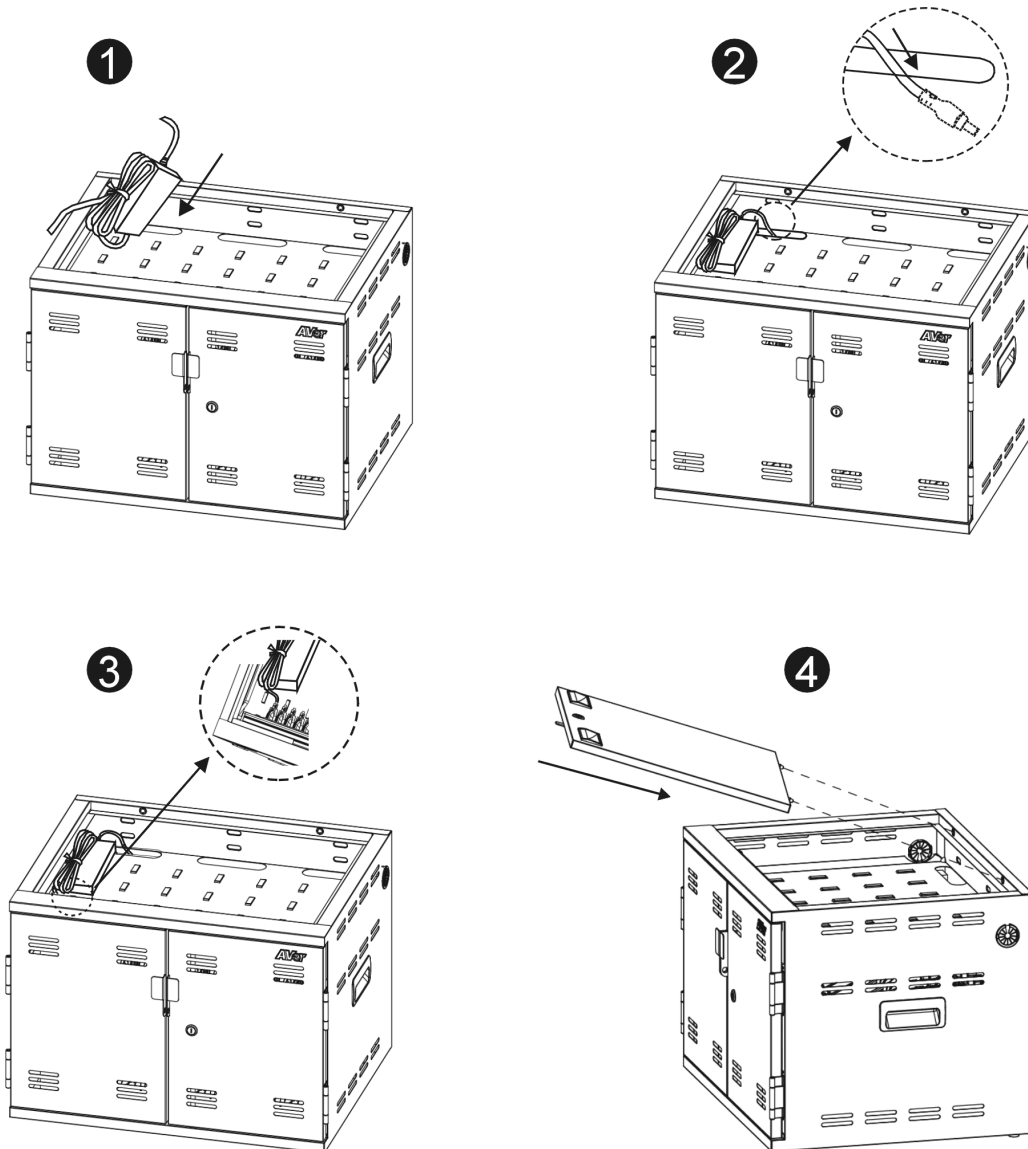
1. Use the included key to open the top cover.
2. Remove the top cover and accessory package.
3. Connect the power cord to power socket located on adapter drawer and wall outlet.
4. Pass the power cable through the cable grommet and install on the cabinet.



[Note] Set the power socket to the **OFF** position before plugging the cabinet to wall outlet.

Adapter Configuration

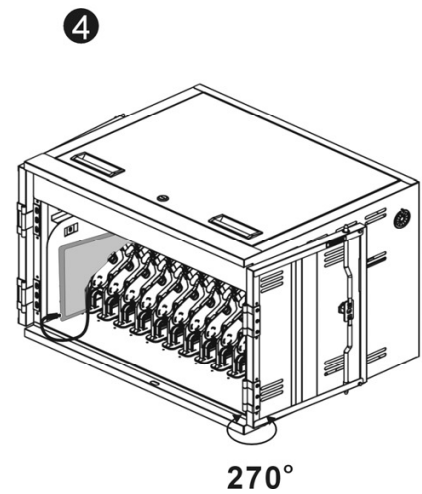
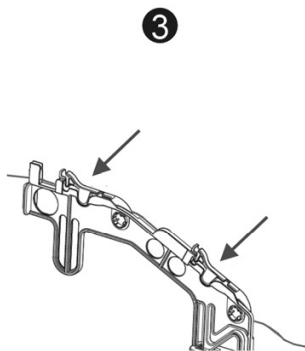
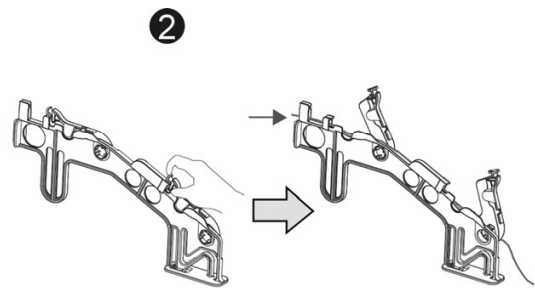
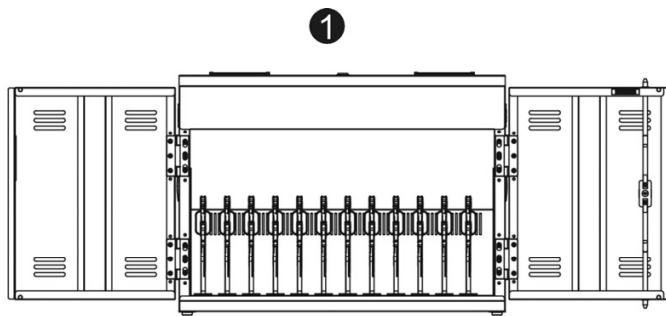
1. Place the power adapter onto the adapter drawer in order.
2. Pass the DC-end of the adapter cable through the hole located on the back of adapter drawer.
3. Plug-in the AC-end of the adapter cable to the power AC socket.
4. Align the top cover hole to install the top cover and use the included lock key to lock it.



[Note] Place the power adapter onto the adapter drawer in order, don't stack the adapters.

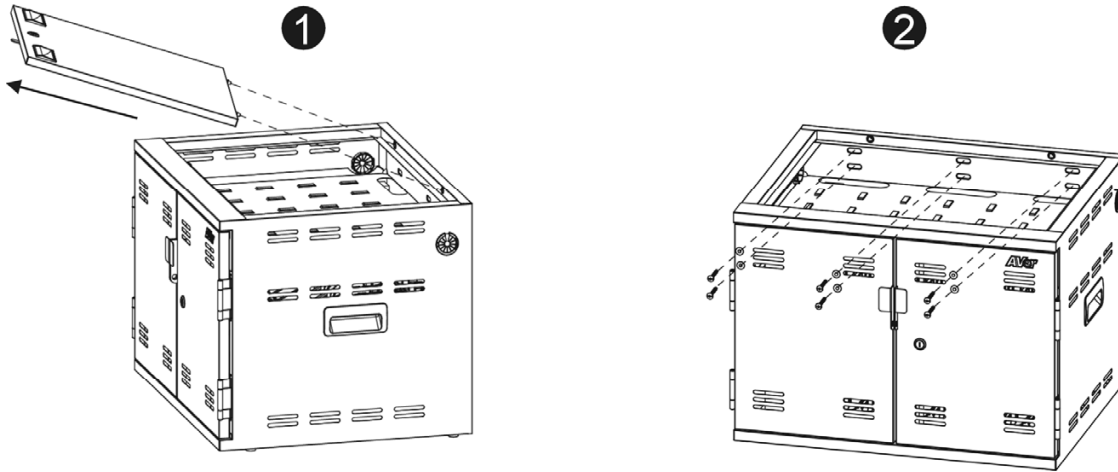
Cable Management

1. Use the included key to open the front door.
2. Route the adapter DC-end cable. Along with the V-shape routing groove.
3. Snap the locking piece until hear a "click" to firmly secure the DC-end cable.
Remember to reserve enough length of power cable to connect the power plug of the device.
4. Place the mobile device into the bay and plug in the DC-connector to the mobile device.



Wall Mount

1. Open the top cover.
2. There are 6 mount holes on the cabinet's rear panel. (See the figure as below for exact mount holes locations).



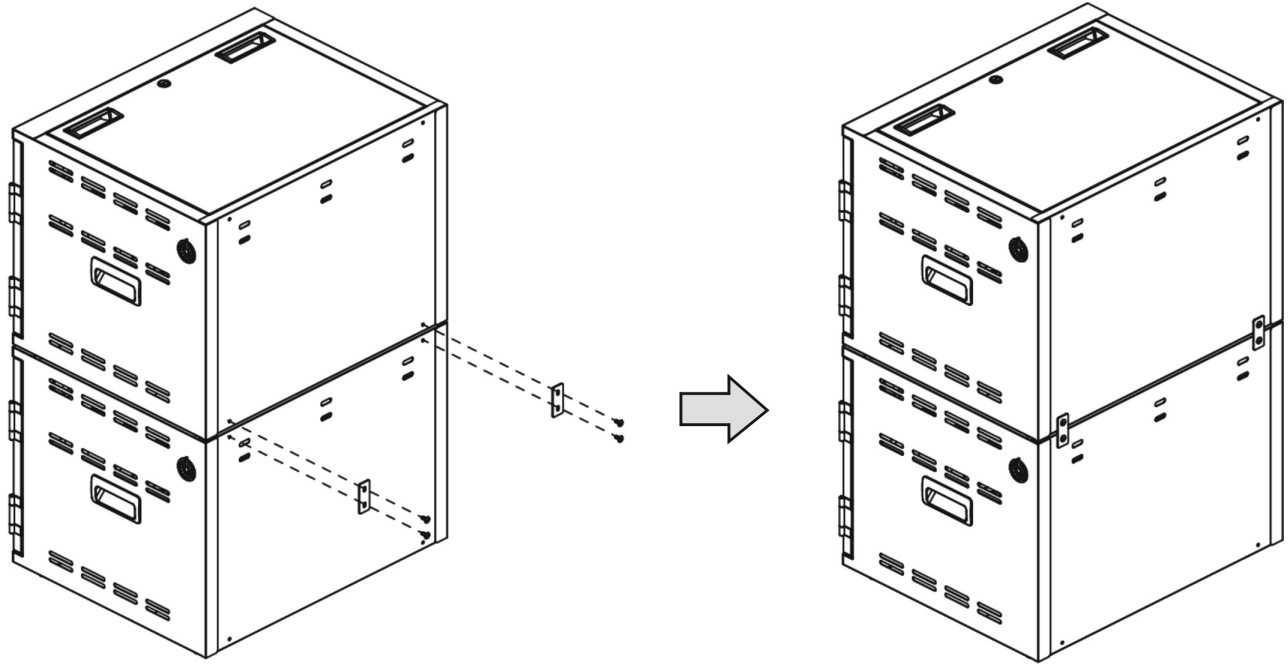
3. Secure the cabinet to the wall studs for drywall mounting. Drill the holes at the wall studs through the drywall, and firmly tap the drywall anchors in until they are flush with the wall.
4. For concrete wall mounting, please use concrete wall anchors and fully flush the anchors to the drilled holes.
5. Secure the cabinet to the wall with provided anchor screws (with washers).
6. Close the top cover and lock it with key.

[Note] The cabinet must be installed by a qualified technician. Use suitable mounting means when installing to cinder block, concrete or drywall.

Stacking Installation

The X12 cabinets can use the included stacking kits to stack cabinets and secure them together. The stacking installation is illustrated below:

[Note] The maximum stack is 2 cabinets.



Troubleshooting

Q: Why are all of my devices plugged in but not charging?

A: 1. Make sure power cords are undamaged.

2. Make sure power cords are firmly inserted into the available socket with stable current.

3. Make sure the power plug and current consumption are compliant with your country specification standards.

Q: My cabinet's main power cord or cabinet components are damaged. Are they covered under warranty?

A: We provide a 10 year warranty on the cabinet and main frame, and 5 years warranty on the electrical components.

Q: How do I know if my devices will exceed more than the allotted current?

A: Have a qualified electrician verify the current consumption of your devices. Perform the test with devices installed and batteries discharged.

Q: When I plug in the device it trips the circuit breaker. What is wrong?

A: You may have other equipment or appliances sharing the same circuit that is causing a circuit overload. Have a qualified electrician check that adequate power is available in the circuit.

Specifications

Model	X12
Capacity	12
Supported Devices	Mobile devices up to 15"
Charging Type	Fully Charging
Power Specification	Power Strip: 100-120V ~ 50/60Hz, 12A
Security	<p>Front door: 2 points mechanism with key lock function. Padlock hole is combine with handle</p> <p>Top cover: 1 point key lock function.</p> <p>The key of front door and top cover use the same key.</p> <p>[Note] Padlock is not included in the package</p>
Fixed Shelf	Yes
Top Surface(work platform)	20kg (44.1lbs)
Shelf Support Weight(ea.)	32.66kg (72lbs)
Adapter Shelves(ea.)	6kg(13.2lbs)
Working Temperature	0°~30°C
Working RH%	10%~90%
Storage Temperature	-40°C~60°C
Storage RH%	5%~95%
Warranty	<p>10 years cabinet and tray</p> <p>5 years electrical components</p>
Cabinet Dimensions (W x D x H)	<p>614.1(W)×483.4(D)×447.8(H) mm</p> <p>24.18"(W)×19.03"(D)×17.63"(H)</p>
Slot Dimensions (W x D x H)	<p>34(W)×419.1(D)×304.8(H) mm</p> <p>1.34"(W)×16.5"(D)×12"(H)</p>
Weight without Devices	22.5 Kg (49.6 lbs) ± 3 Kg(6.61 lbs)

Service and Warranty

All of our products come with a quality and safety assurance.

For customers located in North America, please visit the AVer USA support site for comprehensive RMA, Warranty, and Service information:

<http://averusa.com/classroom-technology/support/>

For customers located outside North America, please visit AVer Global support site:

<http://www.aver.com/>